

IMPORTANT INSTRUCTIONS

For Installation LS343 MH, Halospot, Ingrounds

A
START
HERE

MODELS LS343-22* * * * * 25 * *
LS343-291* * * * * 25 * *



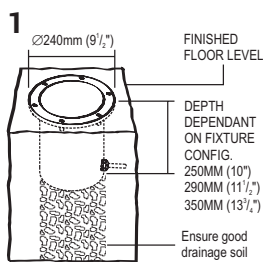
FOR INDOOR AND OUTDOOR USE

WARNING If cable damaged replace with cable supplied by LUMASCAPE only. DO NOT SHORTEN, INTERFERE OR DISCONNECT CABLE FROM FITTING. WARRANTY WILL BE VOID IF CABLE ASSEMBLY IS TAMPERED WITH.

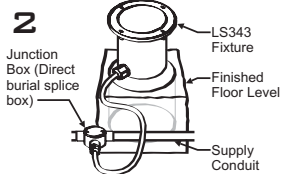
CAUTION



Do not use power tools to tighten screws. Do not exert downward force on screws while not fully tightened. Do not overtighten screws.

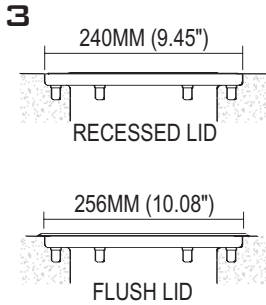


1
Locate Fixtures. Site fixture, in proximity to cabling, in gravel, soil or concrete. Use discretion in locating fixtures as glass can become very hot and may burn.

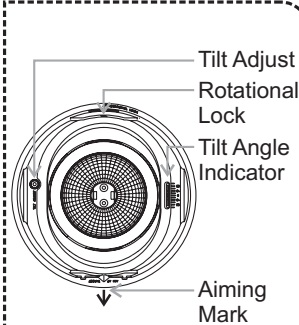


2
Supply Connection
Connect junction box (direct burial splice box) to supply conduit as per instructions. For cable only entry connect underwater rated cable in accordance with local wiring rules. Alternatively, if ordered with 1/2"NPT conduit adaptor connect ensuring watertight seal.

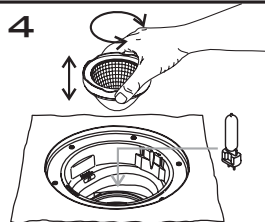
North America Only
Warning: Overcurrent protection for secondary circuit must be provided at the supply transformer in accordance with the National Electric Code.



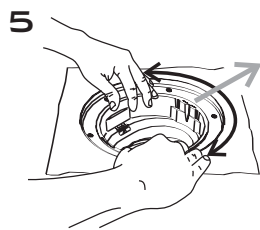
3
Mount Fixture. Mount fixture such that the top lip of flange is flush with finished floor level, as shown above.



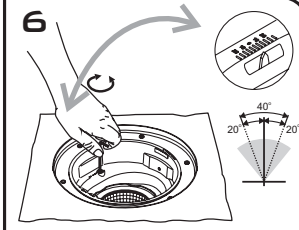
Gimbal Features.



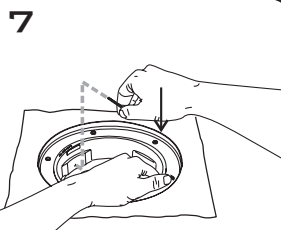
4
Insert lamp into fixture. Unscrew reflector and remove. Insert lamp into lampholder and test. Replace reflector. To ensure reflector does not bind due to heat screw all the way down, then back off 1/8th of a turn



5
Target Gimbal 1. Rotate gimbal until the **Aiming Mark** is targeted as desired.



6
Target Gimbal 2. Adjust gimbal tilt angle by rotating **Tilt Adjust** screw with Allen key supplied. Approximate angle can be read from the **Tilt Angle Indicator**.



7
Lock Gimbal. Whilst exerting downward pressure on gimbal, tighten Rotational Lock grub screw.

RELAMPING

BRACKETS INDICATE INSTALLATION STEPS ABOVE



LUMASCAPE
USA INC.

LUMASCAPE USA INC.

US Head Office
1300 Industrial Rd., Unit #19
San Carlos, CA 94070
USA

Telephone
1-(650)-595-LUMA(5862)

Fax
1-(650)-595-5820

www.lumascope.com

Free Call
1-866-695-LUMA(5862)
(US & Canada)



IMPORTANT INSTRUCTIONS

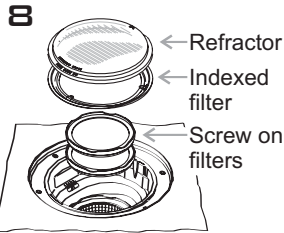
For Installation LS343 MH, Halospot, Ingrounds

B

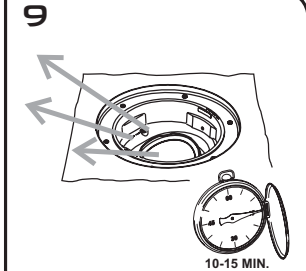
MODELS LS343-22* * * * * 25 * *
LS343-291* * * * * 25 * *



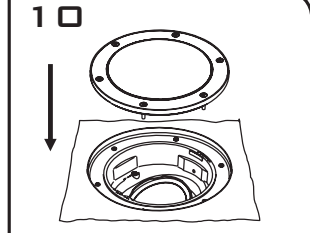
A.C.N. 010 572 773



Accessories.
Add accessories. Note instructions supplied with accessory. Further gimbal adjustments may be required with accessories in place.



Run Fixture.
Allow to burn for 10-15 minutes without lid attached to allow any moisture in fixture to evaporate.



Seal Fixture.
Ensure seal and sealing surface is clean. Clean glass if necessary. Tighten lid screws using the 3mm Allen key supplied. **DO NOT OVERTIGHTEN.**

NORTH AMERICA only:
As per 2002 NEC Section 305. The SOOW cord must be at least 450mm (18 in.) below a minimum 2 inch thick concrete slab.



LUMASCAPE USA INC.

US Head Office
1300 Industrial Rd., Unit #19
San Carlos, CA 94070
USA

Telephone
1-(650)-595-LUMA(5862)

Fax
1-(650)-595-5820

www.lumascape.com

Free Call
1-866-695-LUMA(5862)
(US & Canada)

IMPORTANT INSTRUCTIONS

For Installation LS343 MH, Halospot, Ingrounds

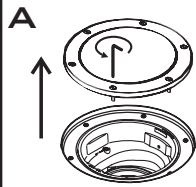
C

MODELS LS343-22* ** ** 25 **
LS343-291* ** ** 25 **



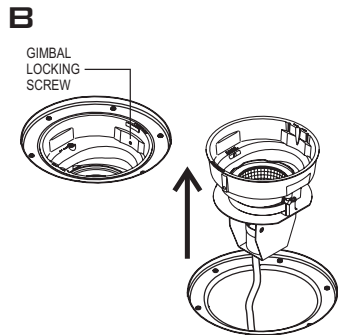
UL US A.C.N. 010 572 773

LAMP SOURCE CONVERSION INSTRUCTION

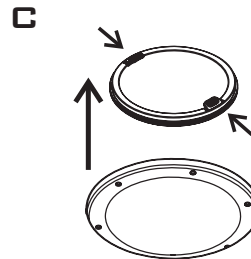


A Isolate and Open Fixture

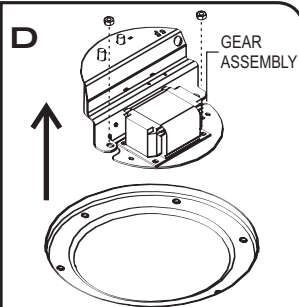
Ensure the fixture is electrically isolated. Loosen the screws with the Allen Key provided. If necessary gently lever lid out with a large screwdriver.



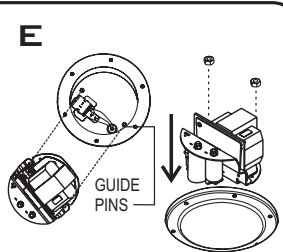
B Remove Gimbal
Remove gimbal by loosening the locking screw and pulling vertically.



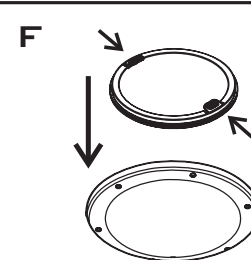
C Remove Heat Shield
Remove heat shield (if supplied) by holding one finger tab and lifting straight out of fixture



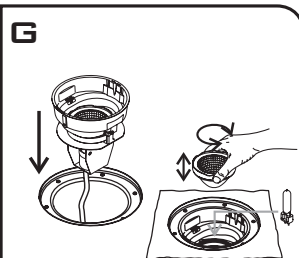
D Remove Gear Assembly
Remove gear assembly by pulling vertically (Note: Gear assembly may be screwed to fixture body).



E Insert New Gear Assembly
Align holes in gear tray with Threaded Guide Pins in base of fixture and insert fully, fit S/S nuts to retain Gear Tray.

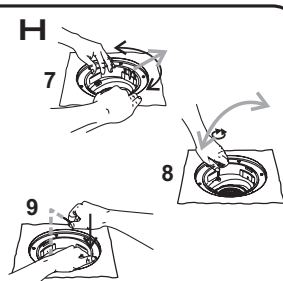


F Replace Heat Shield
Push heat shield (if supplied) down into fixture ensuring that the shiny side is facing up, and that it comes to rest level atop gear assembly



G Replace/Insert Gimbal and Lamp

Connect and insert gimbal into fixture. Remove reflector and insert new lamp. (Check wattage and type with gear label). Refer installation instruction 4 Over.



H Adjust, Aim, Test and Seal
If necessary, readjust and re-aim gimbal position as per instructions 5,6,7 over. Test and seal fixture as per Instructions 8,9,10.



LUMASCAPE
USA INC.

LUMASCAPE USA INC.

US Head Office
1300 Industrial Rd., Unit #19
San Carlos, CA 94070
USA

Telephone
1-(650)-595-LUMA(5862)

Fax
1-(650)-595-5820

www.lumascape.com

Free Call
1-866-695-LUMA(5862)
(US & Canada)