

IMPORTANT INSTRUCTIONS

For Installation LS343 CFL, PAR, HPS, MV Ingrounds

A
START
HERE

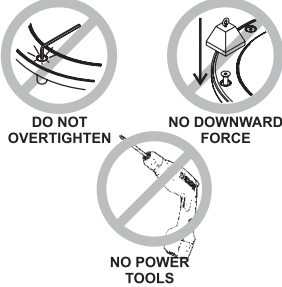
MODELS LS343-23* * * * * 25 * *
 LS343-24* * * * * 25 * *
 LS343-25* * * * * 25 * *
 LS343-26* * * * * 25 * *

FOR INDOOR AND OUTDOOR USE



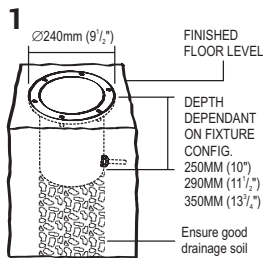
WARNING If cable damaged replace with cable supplied by LUMASCAPE only. DO NOT SHORTEN, INTERFERE OR DISCONNECT CABLE FROM FITTING. WARRANTY WILL BE VOID IF CABLE ASSEMBLY IS TAMPERED WITH.

CAUTION



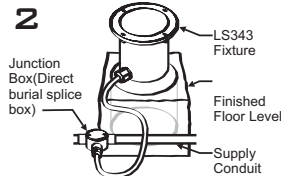
DO NOT OVERTIGHTEN
 NO DOWNWARD FORCE
 NO POWER TOOLS

Do not use power tools to tighten screws. Do not exert downward force on screws while not fully tightened. Do not overtighten screws.



1

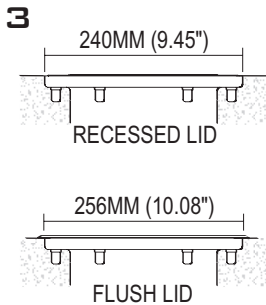
Locate Fixtures. Site fixture, in proximity to cabling, in gravel, soil or concrete. Use discretion in locating fixtures as glass can become very hot and may burn.



2

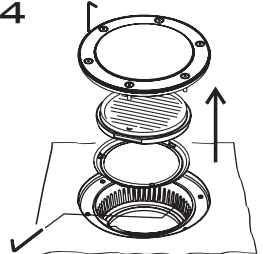
Supply Connection
 Connect junction box (direct burial splice box) to supply conduit as per instructions. For cable only entry connect underwater rated cable in accordance with local wiring rules. Alternatively, if ordered with 1/2"NPT conduit adaptor connect ensuring watertight seal.

North America Only
Warning: Overcurrent protection for secondary circuit must be provided at the supply transformer in accordance with the National Electric Code.



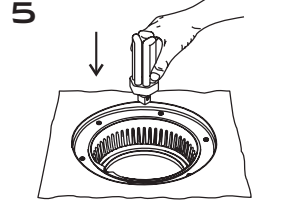
3

Mount Fixture. Mount fixture such that the top lip of flange is flush with finished floor level, as shown above.



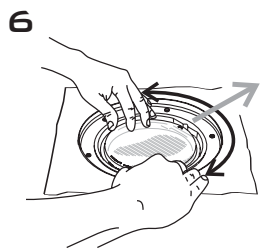
4

Open fixture and Unlock. Loosen screws with allen key provided. If necessary gently lever lid out with large screwdriver. Remove components as shown. Loosen grub screw.



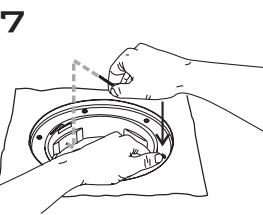
5

Insert lamp into fixture. Check lamp type and wattage with gear tray. Insert lamp into lampholder (Follow lamp manufacturers instructions). Clean any marks from reflector with dry, soft, lint free cloth. Turn on.



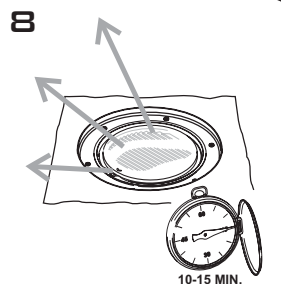
6

Target Gimbal. With lamp illuminated insert any accessory lenses and rotate gimbal until targeted as required. Note the finger relief in casting should point towards target.



7

Lock Gimbal. Remove any accessories and whilst exerting downward pressure on gimbal, tighten grub screw.

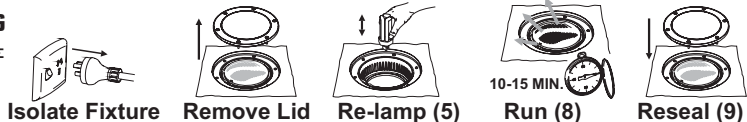


8

Run Fixture. Replace accessories and allow fixture to burn for 10-15 minutes to allow any moisture in fixture to evaporate. **See Over.**

RELAMPING

BRACKETS INDICATE INSTALLATION STEPS ABOVE



LUMASCAPE USA INC.

US Head Office
 1300 Industrial Rd., Unit #19
 San Carlos, CA 94070
 USA

Telephone
 1-(650)-595-LUMA(5862)

Fax
 1-(650)-595-5820

www.lumascope.com

Free Call
1-866-695-LUMA(5862)
 (US & Canada)



IMPORTANT INSTRUCTIONS

For Installation LS343 CFL, PAR, HPS, MV Ingrounds

B

MODELS LS343-23* * * * * 25 * *
 LS343-24* * * * * 25 * *
 LS343-25* * * * * 25 * *
 LS343-26* * * * * 25 * *

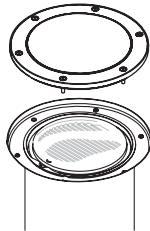


A.C.N. 010 572 773

WARNING

DO NOT SHORTEN, INTERFERE OR DISCONNECT CABLE FROM FITTING. WARRANTY WILL BE VOID IF CABLE ASSEMBLY IS TAMPERED WITH.

9



Seal Fixture.
 Ensure seal and sealing surface is clean. Clean glass if necessary. Tighten lid screws using the 3mm Allen key supplied. DO NOT OVERTIGHTEN.

NORTH AMERICA only:

As per 2002 NEC Section 305. The SOOW cord must be at least 450mm (18 in.) below a minimum 2 inch thick concrete slab.



LUMASCAPE
 USA INC.

LUMASCAPE USA INC.

US Head Office
 1300 Industrial Rd., Unit #19
 San Carlos, CA 94070
 USA

Telephone
 1-(650)-595-LUMA(5862)

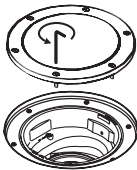
Fax
 1-(650)-595-5820

www.lumascope.com

Free Call
1-866-695-LUMA(5862)
 (US & Canada)

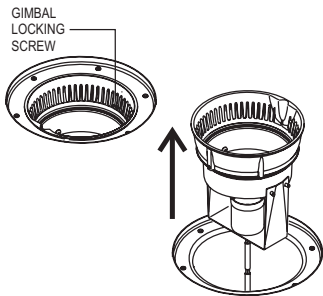
LAMP SOURCE CONVERSION INSTRUCTION

A



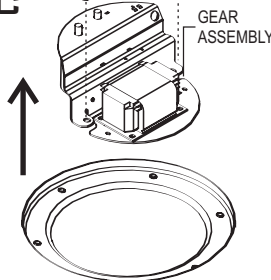
Isolate and Open Fixture
 Ensure the fixture is electrically isolated. Loosen the screws with the Allen Key provided. If necessary gently lever lid out with a large screwdriver.

B



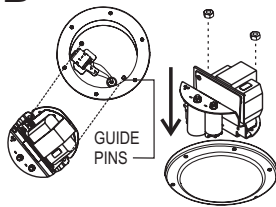
Remove Gimbal
 Remove gimbal by loosening the locking screw and pulling vertically.

C



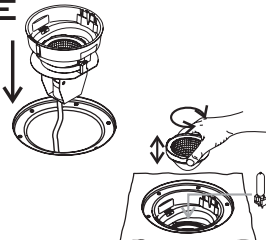
Remove Gear Assembly
 Remove gear assembly by pulling vertically (Note: Gear assembly may be screwed to fixture body).

D



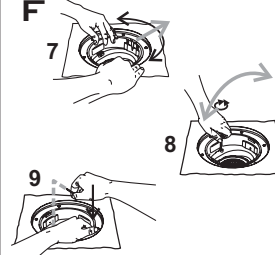
Insert New Gear Assembly
 Align holes in gear tray with Threaded Guide Pins in base of fixture and insert fully, fit S/S nuts to retain Gear Tray.

E



Replace/Insert Gimbal and Lamp
 Connect and insert gimbal into fixture. Remove reflector and insert new lamp, (Check wattage and type with gear label). Refer installation instruction 6 Over.

F



Adjust, Aim, Test and Seal
 If necessary, readjust and re-aim gimbal position as per instructions 7,8,9 over. Test and seal fixture as per Instructions 10,11,12.