



LUMASCAPE

spotlight | floodlight

MODELS LS6011, LS6015, LS6029
LS6022 required - supplied with
LS461-2-229; must be purchased
separately for LS461-2-228 and
LS461-2-252

A.C.N. 010 572 773

IMPORTANT INSTRUCTIONS

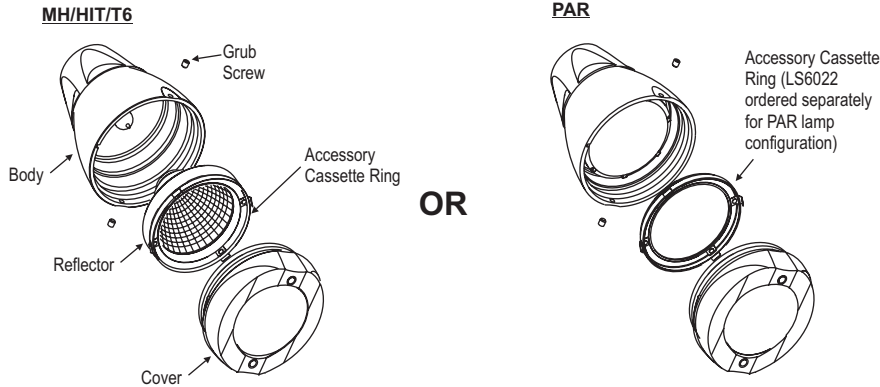
For Installation LS461 Internal Accessories

Warning: The Luminaire should only be used complete with its protective shield (cover)

LumascapE Lighting Industries Pty Ltd
38-44 Enterprise Street, Cleveland, QLD 4163, Australia
PO Box 1875, Cleveland D.C., QLD 4163, Australia
T 07 3286 2299
F 07 3286 6599
E sales@lumascapE.com.au
W www.lumascapE.com.au

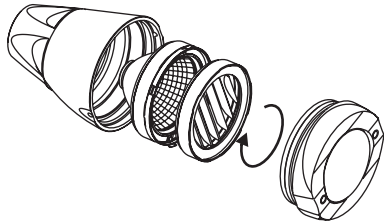
1

Undo the 2 grub screws with 3mm allen key (supplied with fixture) to remove cover.

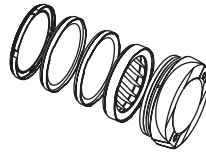


2

Screw louvre, linear spreader or filter accessory on to the accessory cassette ring in a clockwise motion till finger tight and then unscrew 1/8 of a turn. To acquire desired orientation of louvre and linear spreader follow Step 3.



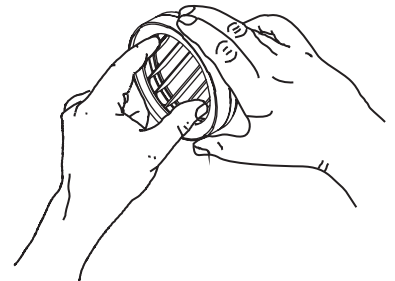
Up to 3 internal accessories including 1 louvre can be fitted.



TO AVOID HEAT BINDING DO NOT OVER TIGHTEN THREADED RINGS. ALWAYS UNSCREW 1/8 OF A TURN

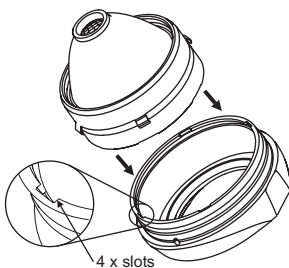
3

To adjust the alignment of the louvre or linear spreader lens gently twist it within its threaded ring to your desired orientation.



4

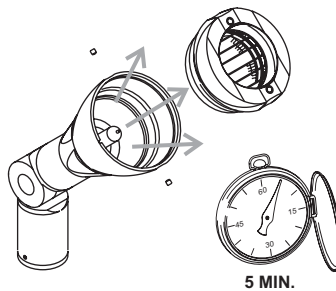
Align the spring clips on the accessory cassette ring with the slots in the cover and gently clip together.



5

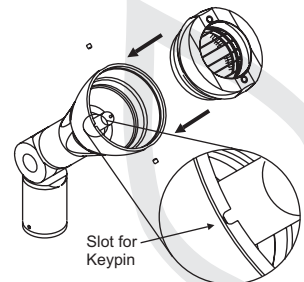
Run Fixture.

Turn fixture on with cover removed for 5 minutes to allow any moisture in fixture to evaporate.



6

Ensure o-ring is not damaged and is clean. Push lid onto fixture, check lid is aligned and seated correctly. Gently tighten grub screws - 'finger tight' do not over tighten. O-ring is coated with MolyKote 111 high temperature o-ring grease - reapply if necessary.



www.lumascapE.com.au

LUMASCAPE
HEAD OFFICE
T 07 3286 2299 F 07 3286 6599

LUMASCAPE
SYDNEY - NSW
T 02 9519 6860 F 02 9519 8834

LUMASCAPE
MELBOURNE - VIC
T 03 9686 1900 F 03 9686 1700

H.I. LIGHTING
LUMASCAPE AGENT - WA
T 08 9321 5422 F 08 9321 5881

LIGHTING PARTNERS AUSTRALIA
LUMASCAPE AGENT - SA
T 08 8232 0074 F 08 8232 0076

NQ LIGHTING
LUMASCAPE AGENT - NTH QLD
T 07 4031 4490 F 07 4031 5933

ECC LIGHTING
LUMASCAPE AGENT - NZ
T 09 379 9680 F 09 308 9328

LUMASCAPE USA INC
Free Call 1-866-595-LUMA(5622)
T 1-(650)-595-LUMA(5622) 1-(650)-595-5820