
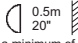
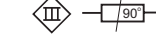


# IMPORTANT INSTRUCTIONS

## For installation of Fitting LS333ANI

<b>MODELS</b>	LS333ANI-1 / LS333ANI-2		 0.5m 20° Locate a minimum of .5m (20") from illuminated object	 A.C.N. 010 572 773
	12V 20watt max. lamp IP68 rated			

### WARNING

DO NOT SHORTEN, INTERFERE OR DISCONNECT CABLE FROM FITTING. WARRANTY WILL BE VOID IF CABLE ASSEMBLY IS TAMPERED WITH.

### 1 INSTALLATION - LS333ANI DRY NICHE

#### NICHE INSTALLATION (FIG 1)

1. If Dry Niche is to be set in concrete remove the fixture from the niche by removing the cover plate and then removing the two countersunk retaining screws. Remove the baffle plate and disconnect the transformer wiring from the terminal block. Store the fitting, baffle plate, seal and screws in a safe place.
2. Locate niche in site and position level. (Fixtures should not be installed within 3m (10 feet) of a pool, spa, or fountain.) If concreting make allowance for any finishing material above the concrete. Be sure to position and orient the fixture in a suitable location for connection to power supply.
3. If using armoured cable entry (LS333ANI-2), connect wires to power supply in accordance with the LS630/LS640/LS644 Connection Box instructions. If using standard cable entry (LS333ANI-1), connect wires in accordance with local electrical authority wiring rules.
4. If concreting fit fibreboard shield to opening of niche

Before concreting. Ensure that no concrete enters niche.

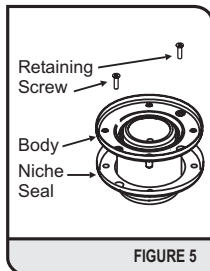


FIGURE 5

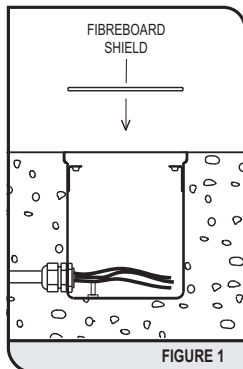


FIGURE 1

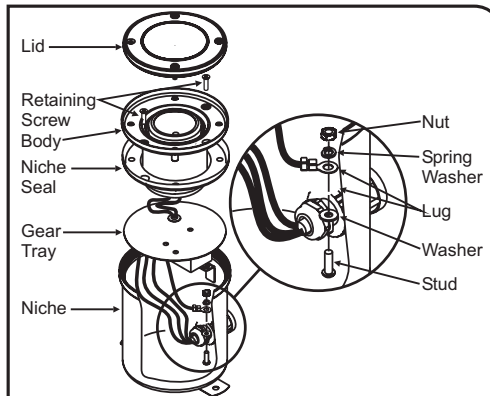


FIGURE 2

### 2 RELAMPING

1. Remove lamp gimbal from body of fitting. Gently pull on the lamp holder leads to remove heatshield/lamp assembly from gimbal ring (fig 3).
2. Once removed, take the rim of the lamp between your thumb and forefinger. The slots provided in the heatshield allow for ease of grip. Pull to remove lamp.

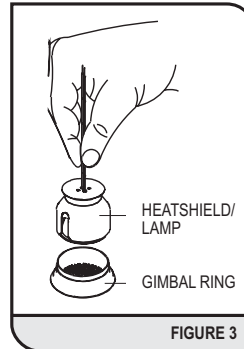


FIGURE 3

#### FITTING INSTALLATION - LS333ANI INTEGRAL TRANSFORMER MAINS SUPPLY (FIG 2)

##### Note: If niche has been set in concrete:

- Remove fibreboard shield by piercing with a screw driver and levering out.
- Thread the 12V leads through the hole in the baffle plate and connect to the terminal block in the fitting.
- Reconnect mains supply to gear tray.
- Position the gear in the niche. Ensure there is no sand or grit on fitting sealing area. Fit the seal to the body aligning holes in niche seal with pins and screw holes. Gently push body and seal into niche aligning countersunk screw lug holes with retaining lugs. Secure the body with the countersunk retaining screws supplied (fig 5).

1. Remove the lid from the fixture. Test the fixture for correct operation. Run for 5 minutes without lid to remove any moisture from fitting.
2. Ensure there is no sand or grit on fitting sealing area or retaining screw threads. Fit lid/seal assembly. Tighten retaining screws firmly to maintain maximum seal.

##### Note: Thermal protection device installed.

- Do not locate fitting near heat sources.
- Check fixture label for correct supply voltage

#### IMPORTANT

When Installing or re-lamping, the thermal cutout **MUST** be repositioned beneath the terminal block mounting bracket, within the LS333 fixture (refer fig 4). Failure to do this will cause the fixture to cycle.

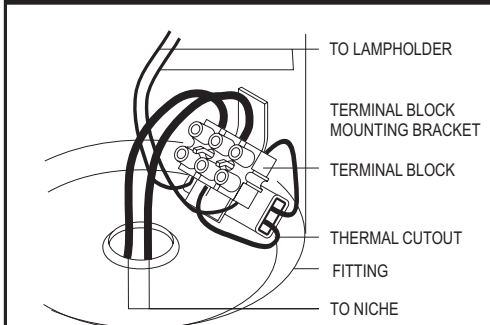


FIGURE 4



#### LUMASCAPE USA INC.

US Head Office  
1300 Industrial Rd., Unit #19  
San Carlos, CA 94070  
USA

Telephone  
1-(650)-595-LUMA(5862)

Fax  
1-(650)-595-5820

www.lumascope.com

Free Call  
**1-866-695-LUMA(5862)**  
(US & Canada)