

1300 Industrial Road, Unit #19  
San Carlos, CA 94070

Tel: 1-(650)-595-LUMA(5862)

Fax: 1-(650)-595-5820

Email: [info@lumascope.com](mailto:info@lumascope.com)

FREE CALL 1-866-695-LUMA(5862) US & Canada

LUMASCAPE USA  
INC.

LS363

Ingrade



### Specifications

<b>Lamp source</b>	22W	MH / HIT BT5 (PGJ5)
	50W max	MR16 (GU5.3)
	18W	CFL / TC-T (GX24q-2)
	26W	CFL / TC-T (GX24q-3)
	75W max	PAR 30/38 (E26 medium)
<b>UL classification</b>	Suitable for wet locations	
<b>IP rating</b>	IP68	
<b>Construction</b>	316 marine grade stainless steel	
<b>Installation types</b>	Direct burial, landscapes, etc. Pre-installation blackout, drive-over or other installations requiring pre-installation mounting kit.	
<b>Drive-over</b>	With <b>OptiClear™</b> lens and pre-installation blackout (LS644-K)	
<b>Static load rating</b>	3956 lb (1800kg) with <b>OptiClear™</b> lens and pre-installation blackout (LS644-K)	
<b>Impact rating</b>	IK9 with <b>OptiClear™</b> lens	
<b>Standard inclusions</b>	Teflon coated cover screws <b>MicroAntiLeach™</b> cable entry Thermal cutout Humidity absorbing desiccant	
<b>Ambient operating temperature</b>	32°F to 122°F (0°C to 40°C)	
<b>Warranty</b>	10 year structural, 1 year electrical	
<b>Accessories</b> <i>Order separately</i>	Refer accessories matrix behind	
<b>Photometrics</b>	Refer to <a href="http://www.lumascope.com">www.lumascope.com</a>	
<b>Glass temperature</b> ≤149°F (≤65°C)	<b>HumanTouch™</b> compliant models 20W MH / HIT T4 50W max MR16 18W CFL / TC-T	



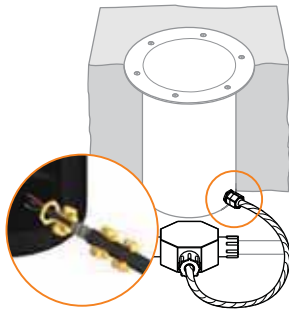
LS363 20W MH Round Flush Cover

*Any luminaire can become hot - take care with appropriate use and placement*

## Why Use Direct Burial

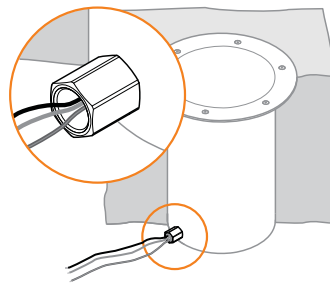
Direct burial installation is ideal for landscaping areas or in locations where the depth is restricted. This type of installation also allows for maximum heat dissipation. The stainless steel construction of the luminaire performs flawlessly in alkaline and acidic soil types, as well as chemically fertilized landscapes.

## Cable Entry Options for Direct Burial



### Armored Cable MC & Splice Box

Armored cable 2ft (0.6m) provides protection against damage to cable between luminaire and 4 way splice box (included). Allows for loop in/loop out and flexibility of luminaire placement.



### Single Conduit Entry 0.5in NPT

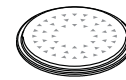
For 0.5in conduit installation with **MicroAntiLeach™** cable entry c/w 6.5ft (2.0m) hook-up wire.

## Lens Options



### OptiClear™ Glass

Glass of very high optical purity and load strength. Suitable for drive-over applications.



### GripGlass™

OptiClear™ glass with slip reduction glazing process. Suitable for drive-over applications.



### Borosilicate Glass

Ideal for general use areas. Not suitable for drive-over application.

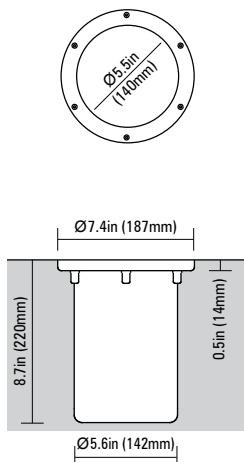
## Cover Options for Direct Burial

Use recessed cover for installation in soil, grass, pavers and other uneven surfaces where no cover overhang is desired.



### Recessed Cover

- SS316: Polished
- SS316: Brushed
- Brass: Polished

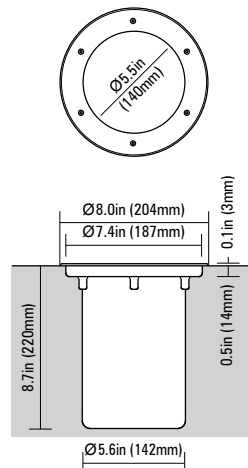


Use flush covers for installation in fine finished surfaces such as granite and marble. They can also be used in some suspended applications (decks, etc). The flush cover will conceal gaps between the luminaire and the surrounding surface.



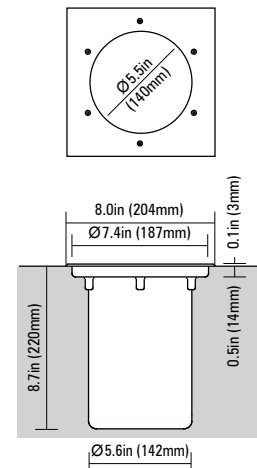
### Round Flush Cover

- SS316: Polished
- SS316: Brushed
- Brass: Polished

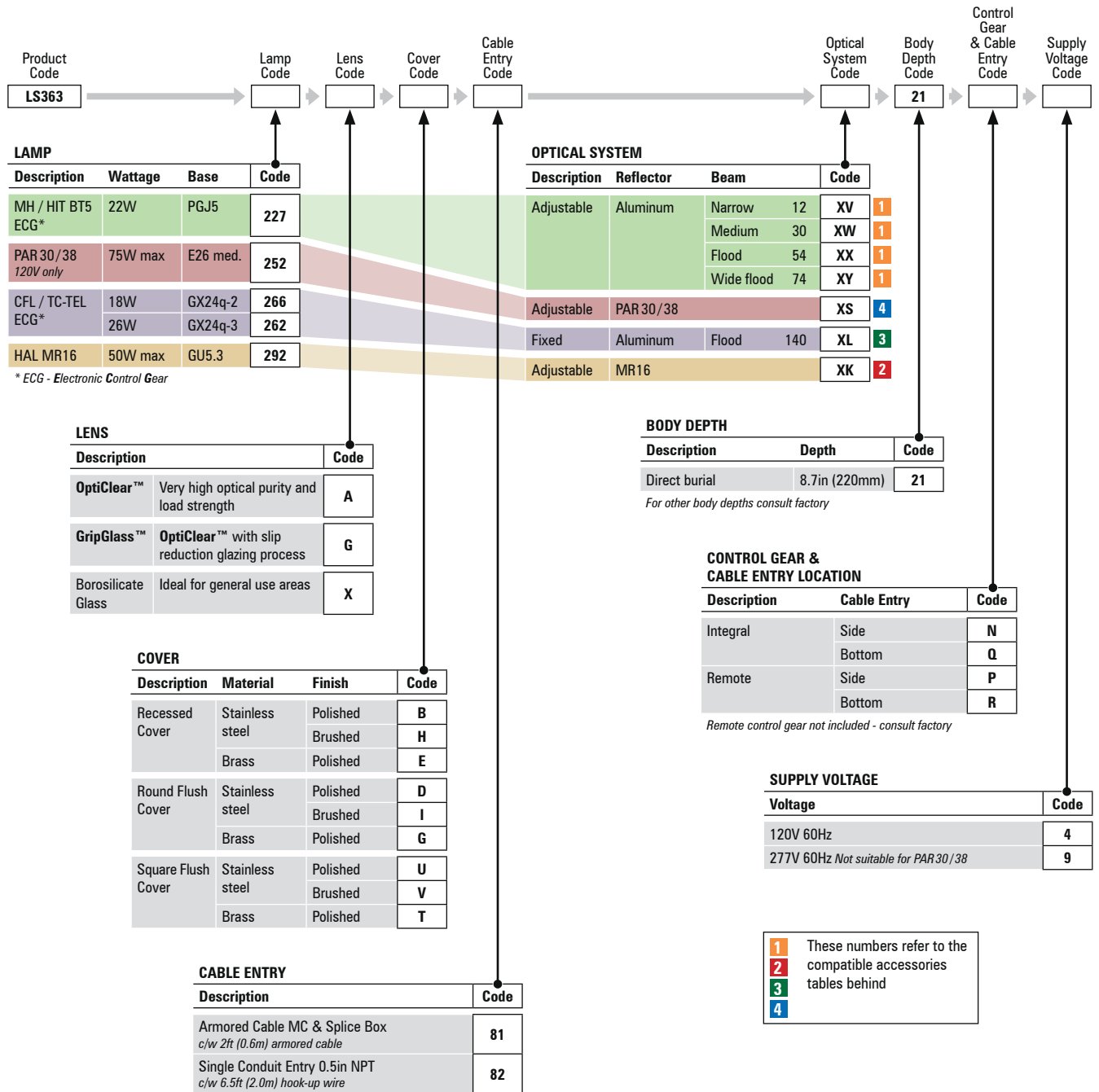


### Square Flush Cover

- SS316: Polished
- SS316: Brushed
- Brass: Polished



# LS363 Direct Burial

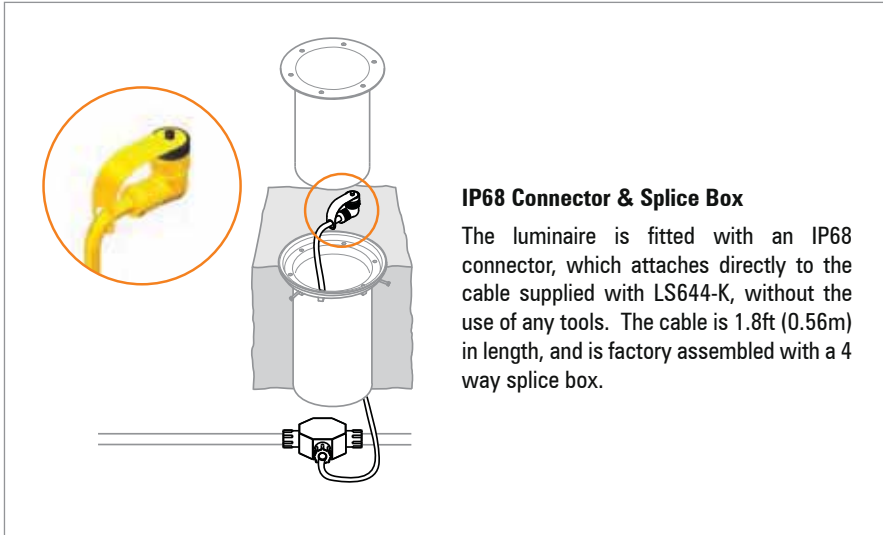


# LS363 Pre-Installation Blockout

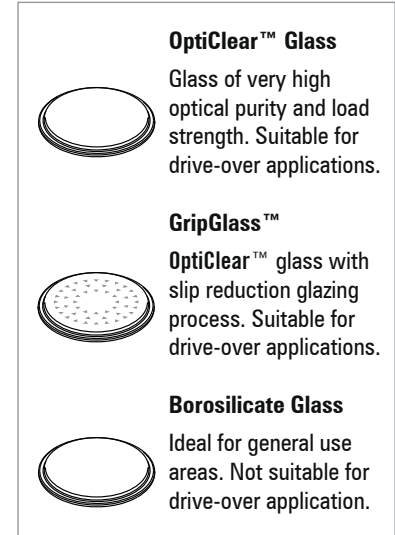
## Why Use Pre-Installation Blockout

This type of installation requires the LS644-K pre-installation kit (order separately) which acts as a blockout, and is intended for installation before the luminaire. This method ensures the luminaire itself is not damaged during concreting or other site works, and also allows for all wiring to be completed prior to luminaire placement. Pre-installation also allows for off-site maintenance, via the detachable IP68 connector fitted on the luminaire housing. The mating connector on the cable has a sealing cap which ensures water does not enter the cable before the installation is completed. Pre-installation is required for all drive-over applications.

## Cable Entry Option for Pre-Installation Blockout



## Lens Options



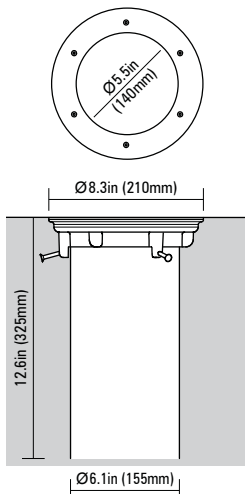
## Cover Options for Pre-Installation Blockout

Flush covers for pre-installation use special seals and support bushes to ensure static loads up to 3 956 lb (1 800kg) are properly supported. In order to achieve this drive-over rating, **OptiClear™** or **GripGlass™** must be used.

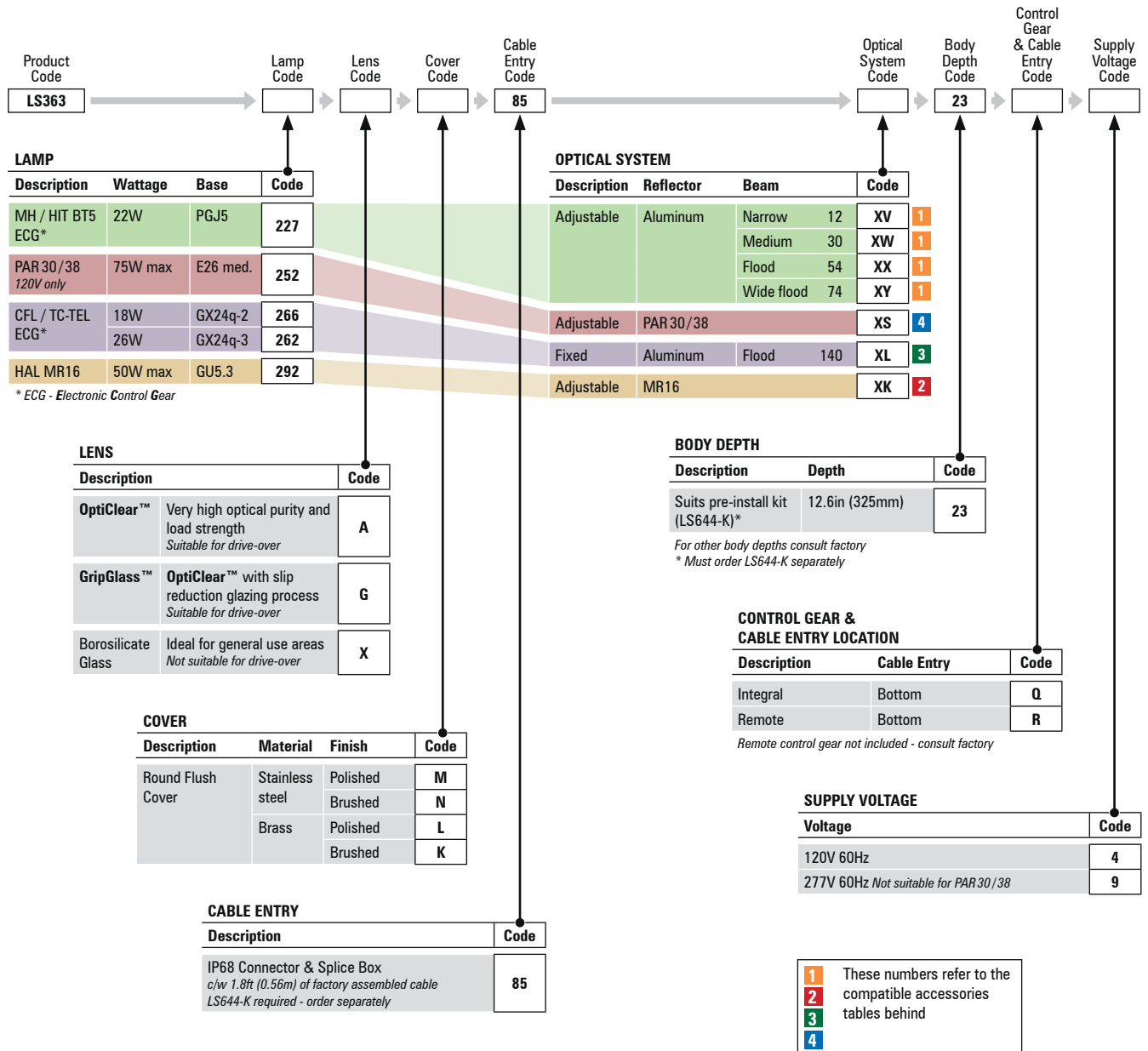


### Pre-Installation Blockout Round Flush Cover

- SS316: Polished
- Brass: Polished
- SS316: Brushed
- Brass: Brushed



# LS363 Pre-Installation Blockout



1

MH CDM-TM  
Adjustable Aluminum Reflector  
XV / XW / XX / XY

Stacking and order of accessories

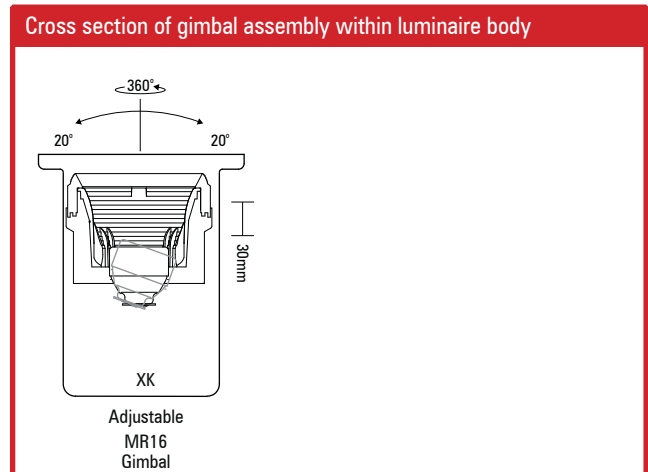
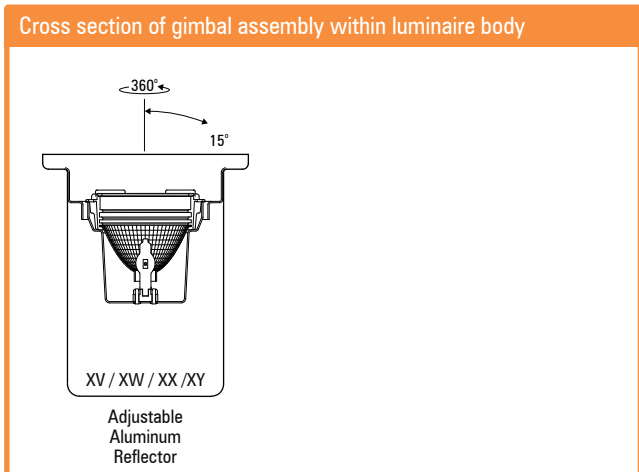
Other accessory stacking options may be available - consult factory

2

MR16  
Adjustable MR16 Gimbal  
XK

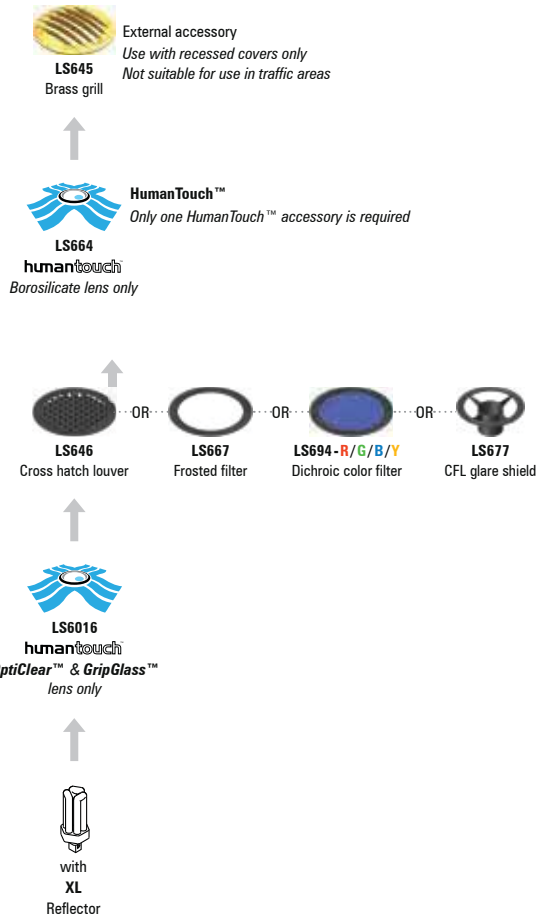
Stacking and order of accessories

Other accessory stacking options may be available - consult factory



**3** CFL / TC-T  
Fixed Aluminum Reflector  
XL

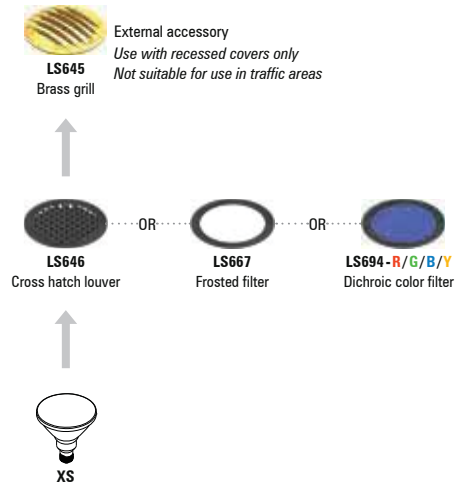
Stacking and order of accessories



Other accessory stacking options may be available - consult factory

**4** PAR30 - PAR38  
Fixed PAR Lamp  
XS

Stacking and order of accessories



Other accessory stacking options may be available - consult factory

