

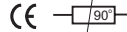
IMPORTANT INSTRUCTIONS

For Installation LS343

A
START
HERE

MODELS LS343 Inground

FOR INDOOR AND OUTDOOR USE



A.C.N. 010 572 773

WARNING

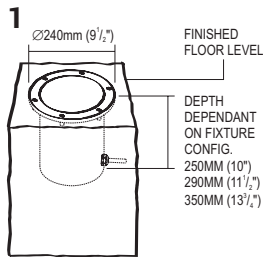
DO NOT SHORTEN, INTERFERE OR DISCONNECT CABLE FROM FITTING. WARRANTY WILL BE VOID IF CABLE ASSEMBLY IS TAMPERED WITH.

Note: If cable damaged replace with cable supplied by LUMASCAPE only.

CAUTION

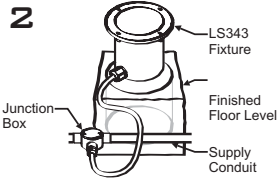


Do not use power tools to tighten screws. Do not exert downward force on screws while not fully tightened. Do not overtighten screws.



Locate Fixtures

Site fixture, in proximity to cabling, in gravel, soil or concrete. Use discretion in locating fixtures as glass can become very hot and may burn.

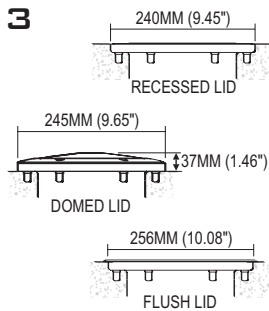


Supply Connection

Connect junction box to supply conduit as per instructions. For cable only entry connect underwater rated cable in accordance with local wiring rules. Alternatively, if ordered with 1/2"NPT conduit adaptor connect ensuring watertight seal.

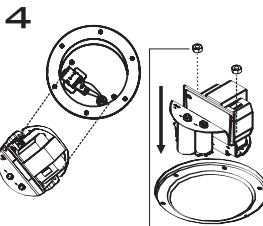
North America Only

Warning: Overcurrent protection for secondary circuit must be provided at the supply transformer in accordance with the National Electric Code.



Mount Fixture

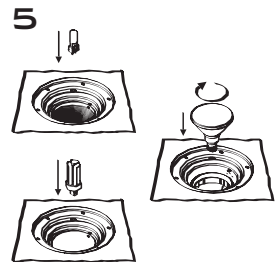
Mount fixture with either top lip or bottom surface of flange, flush with finished floor level, as shown above.



SECURE GEARTRAY WITH SUPPLIED NUTS.

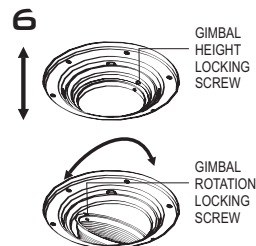
Fix Geartray with Nuts

Geartray is to be aligned with Threaded Guide Pins in base and retained with S/S nuts supplied to prevent gear tray from falling loose.



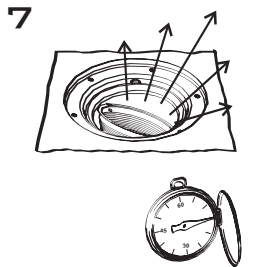
Insert Lamp

Check lamp WATTAGE, VOLTAGE, and TYPE, and insert into lampholder (refer to lamp manufacturers documentation for handling precautions).



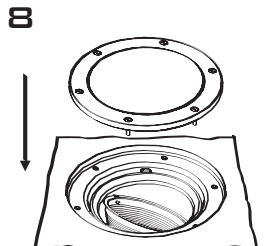
Adjust Gimbal Position.

Adjust the vertical position of the gimbal to minimise glare, and tighten locking screw. Rotate gimbal to desired direction and tighten locking screw.



Test Fixture

Test to ensure fixture is operational. Allow to burn for 10-15 minutes to allow any moisture in fixture to evaporate.



Seal Fixture

Ensure seal and sealing surface is clean. Clean glass if necessary. Tighten lid screws using the 3mm Allen key supplied. DO NOT OVERTIGHTEN.

NORTH AMERICA only:

As per 2002 NEC Section 305. The SOOW cord must be a least 450mm (18 in.) below a minimum 2 inch thick concrete slab.

SEE OTHER SIDE
FOR RE-LAMPING



LUMASCAPE
USA INC.

LUMASCAPE USA INC.

US Head Office
1300 Industrial Rd., Unit #19
San Carlos, CA 94070
USA

Telephone
1-(650)-595-LUMA(5862)

Fax
1-(650)-595-5820

www.lumascope.com

Free Call
1-866-695-LUMA(5862)
(US & Canada)



IMPORTANT INSTRUCTIONS

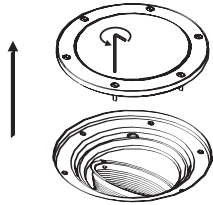
For Installation LS343

B

MODELS	LS343 Inground	  
	FOR INDOOR AND OUTDOOR USE	

RELAMPING

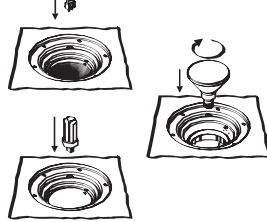
A



Isolate and Open Fixture

Ensure the fixture is electrically isolated. Loosen the screws with the Allen Key provided. If necessary gently lever lid out with a large screwdriver.

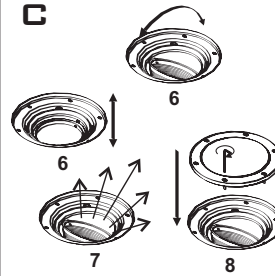
B



Replace Lamp

Remove old lamp and check condition of lampholder. Check new lamp WATTAGE, VOLTAGE and TYPE. Insert new lamp. (Refer installation instruction 4 over.)

C

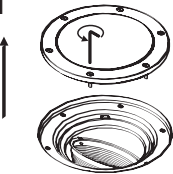


Adjust, Aim, Test and Seal

If necessary, readjust and re-aim gimbal position. Test and seal fixture as per installation Instructions 6 through to 8, over.

LAMP SOURCE CONVERSION INSTRUCTION

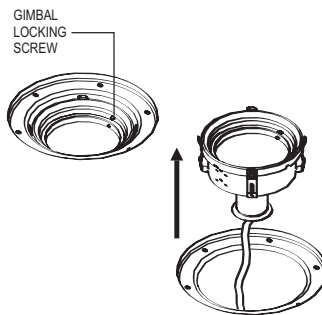
1



Isolate and Open Fixture

Ensure the fixture is electrically isolated. Loosen the screws with the Allen Key provided. If necessary gently lever lid out with a large screwdriver.

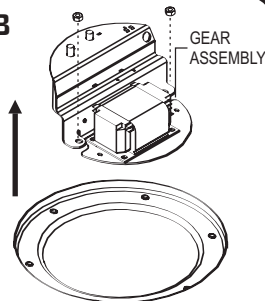
2



Remove Gimbal

Remove gimbal by loosening the locking screw and pulling vertically.

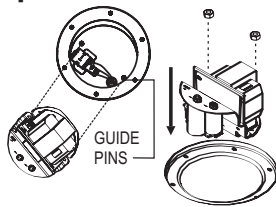
3



Remove Gear Assembly

Remove gear assembly by pulling vertically (Note: Gear assembly may be screwed to fixture body).

4



Insert New Gear Assembly

Align holes in gear tray with Threaded Guide Pins in base of fixture and insert fully, fit S/S nuts to retain Gear Tray.

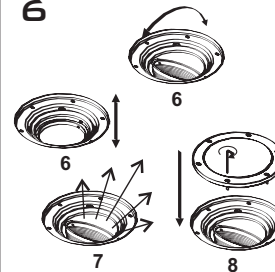
5



Replace Lamp

Remove old lamp and check condition of lampholder. Check new lamp WATTAGE, VOLTAGE and TYPE. Insert new lamp. (Refer installation instruction 4 over.)

6



Adjust, Aim, Test and Seal

If necessary, readjust and re-aim gimbal position. Test and seal fixture as per installation Instructions 6 through to 8, over.



LUMASCAPE
USA INC.

LUMASCAPE USA INC.

US Head Office
1300 Industrial Rd., Unit #19
San Carlos, CA 94070
USA

Telephone
1-(650)-595-LUMA(5862)

Fax
1-(650)-595-5820

www.lumascope.com

Free Call
1-866-695-LUMA(5862)
(US & Canada)