

INSTALLATION INSTRUCTIONS

SPOTLIGHT AND FLOODLIGHT
MODEL: LS421LED Centria Surface Mount
INPUT VOLTAGE: 120-277 V, 50/60 Hz



LS421LED Centria Surface Mount

Warranty void if not installed per instructions and local electrical code

WARNING

Do not use power tools to assemble or fasten.

For wall mount use only

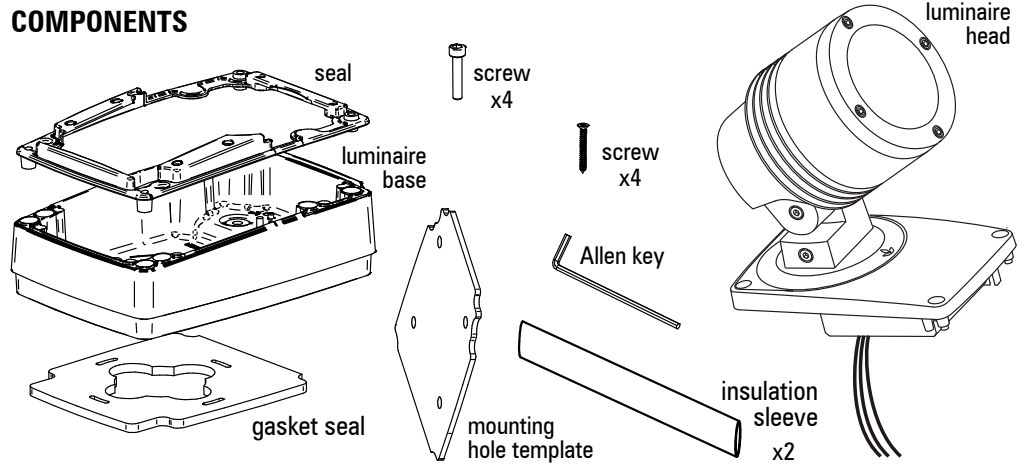
Do not operate luminaire with missing or damaged components

Install in accordance with National Electric Code, ANSI/NFPA 70 or the Canadian Electrical Code, Part I (CEC), CSA C22.1



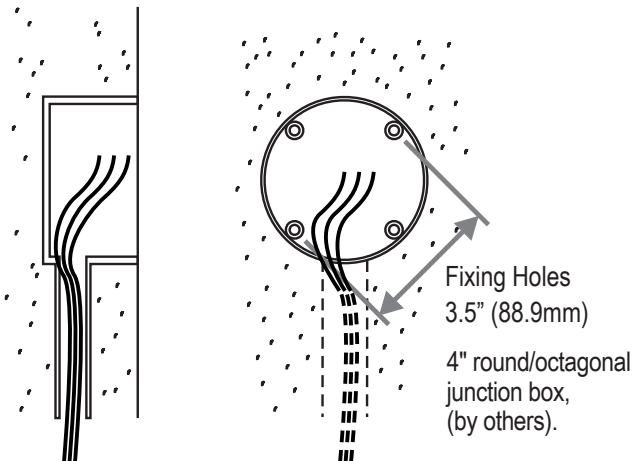
KEEP ELECTRONICS FREE FROM DIRT AND MOISTURE

COMPONENTS



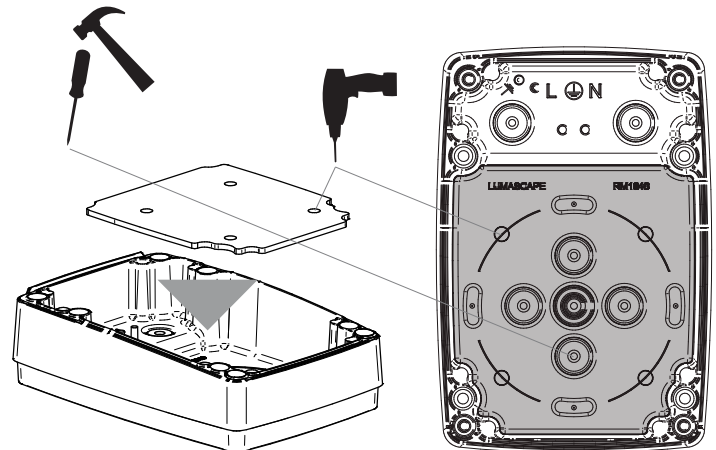
1. Make sure all power is isolated before you begin!

Run supply wires to the junction box on which the luminaire is to be installed.



2. Drill J-box mounting holes

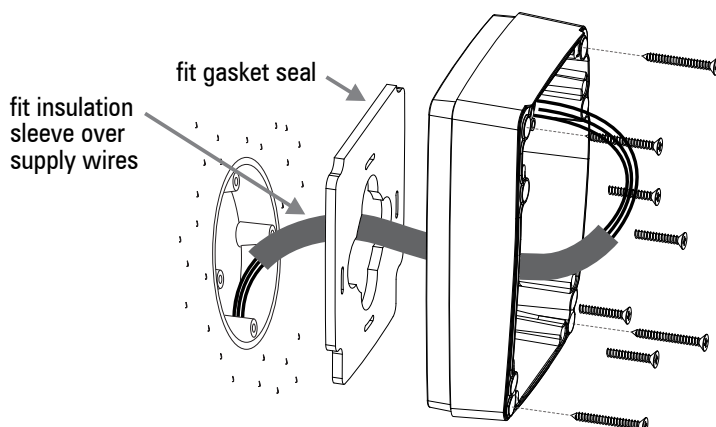
Insert mounting hole template into luminaire base and drill holes as required. Remove template and punch or drill a hole for the supply wires.



3. Connect and mount luminaire base

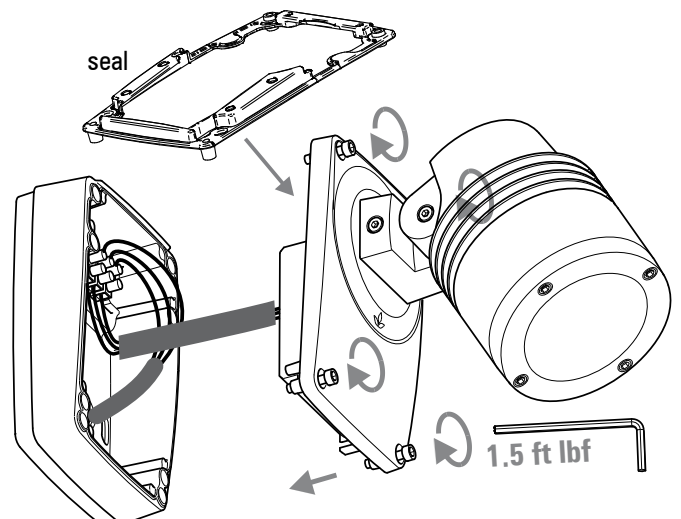
Cover supply wires with insulation sleeve and connect luminaire to supply using terminal block. Refer to wiring diagram in back for details. Screw down luminaire base on junction box ensuring gasket seal is correctly inserted between junction box and luminaire base. If required use additional screws to mount luminaire base to mounting surface.

It is the installers responsibility to ensure proper seal against wall to stop moisture entering the fixture.



4. Seal luminaire

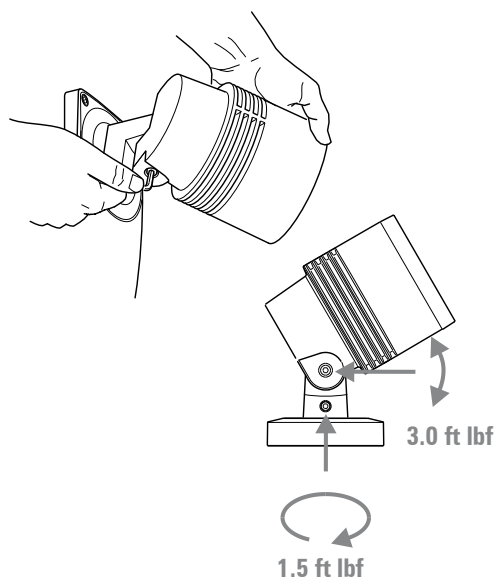
Connect the luminaire head to the base by first connecting the driver wires to the corresponding wires on the supply side using the terminal block. Refer to wiring diagram in back for details. Secondly screw the luminaire head to the base, ensuring the seal is correctly in place between the two components.



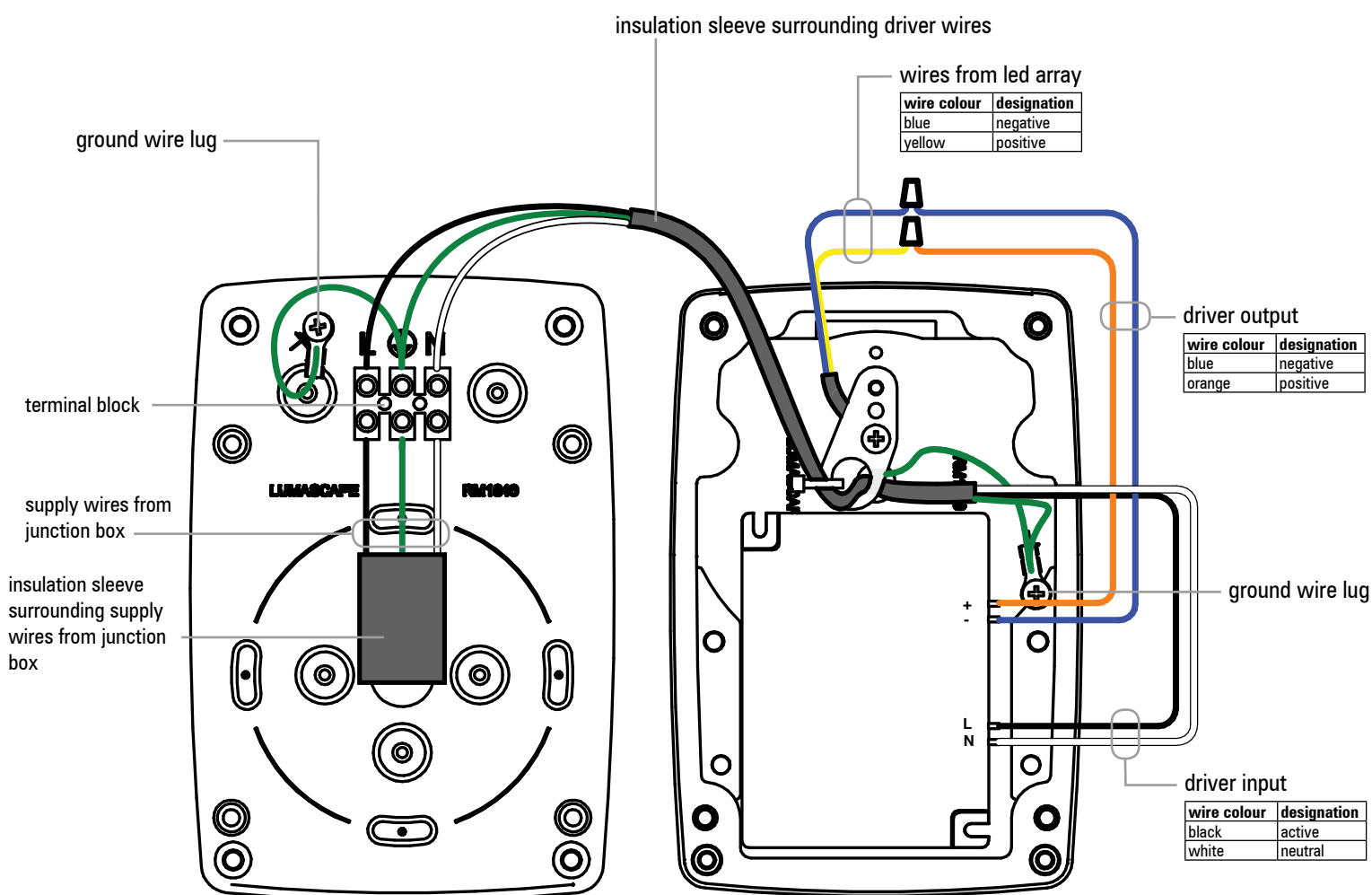
5.

Aim luminaire

Aim luminaire as desired and secure by tightening screws.



WIRING DIAGRAM



Should you experience any difficulty, please contact Lumascope directly: phone (866) 695-5862 or email info@lumascope.com

IF IN DOUBT, PLEASE CALL

www.lumascope.com

Copyright ©2014 LUMASCOPE USA INC.

IN0085US - 17 April 2014